



INDUSTRIAL TUMBLE-DRYER

IDR190

9 KG

FEATURES

- Standard galvanized drum with large diameter
- Easy-to-use microprocessor (ECT)
- Combination of radial and axial airflow
 - maximal heat transfer
 - low energy consumption
 - short drying time
- Large door opening for easy loading and unloading
- Self cleaning lint screen

OPTIONS

- Coin operated version
- Stainless steel drum
- Reverse drum
- Double door glass and insulation
- Full control programmer
- Residual moisture control
 - safe drying of delicate linen
 - humidity detection in %
 - ideal in combination with Softwash®
 - Ideal for dry cleaners, fire departments
 - available on Easy and Full Control
- Stainless steel front
- Wireless communication with cloud-based systems (WiFi kit - to order through Accessories)



IDR190

DRUM
 CAPACITY 1:18
 CAPACITY 1:22
 VOLUME (L)
 DIAMETER (MM)
 DRYING PERFORMANCE
 AIRFLOW (M³/H)
 DRYING AVERAGE (L/MIN)
 GAS HEATING
 GAS CONNECTION (IN)

ELECTRICAL CONNECTION

ENERGY (KW)
 ENERGY (kBTU/H)
 ELECTRICAL HEATING

ELECTRICAL CONNECTION

ENERGY (KW)
 MOTOR
 FAN (KW)
 DRIVE (KW)

CONNECTION
 EXHAUST (MM)
 PROGRAMMER
 EASY CONTROL
 - antivandal (ECT)

FULL CONTROL

DIMENSIONS
 H X W X D (MM)
 NET WEIGHT (KG)

TRANSPORT DATA
 PACKED H X W X D (MM)
 GROSS WEIGHT (KG)

9
 8
 190
 Ø760
 350
 0,150
 1/2"
 1x 208-240V 50Hz
 3x 208-240V 50Hz
 3x 380-415V 50Hz
 3x 380-415V +N 50Hz
 3x 440V 60Hz
 3x 480V 50Hz
 3x 480V 60Hz
 12,5
 42,7
 3x 208-240V 50Hz
 3x 380-415V 50Hz
 3x 440V 60Hz
 3x 480V 50Hz
 3x 480V 60Hz

6/9/12

0,37

0,18

Ø150

Standard

Available

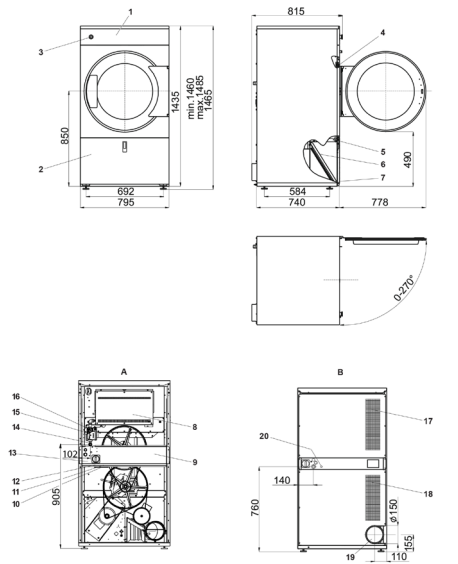
1465 x 795 x 815

170

1570 x 880 x 885

180

The data concerning dimensions of machines include all extended parts



1. Control panel
2. Lint screen cover
3. Emergency stop button
4. Door lock microswitch
5. Lint cover microswitch
6. Lint screen
7. Serial plate
8. Heating chamber
9. Serial plate
10. Airflow switch
11. External payment system connection
12. Main power supply
13. Main switch
14. Gas supply (G models only)
15. Pressure regulator (G models only)
16. Gas valve (G models only)
17. Suction
18. Suction
19. Exhaust piping
20. not applicable for IPSO